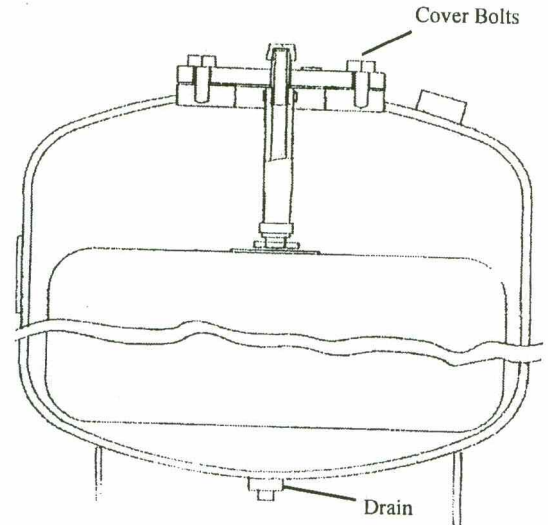


WPA Bladder Replacement Installation Sheet

Installation Instructions

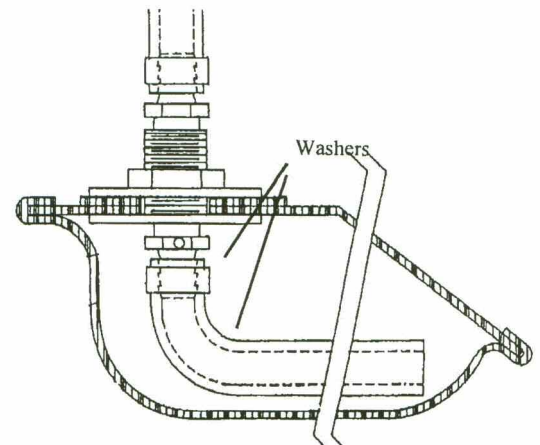
1. Install the tank and connect into the system.
DO NOT REMOVE THE BOTTOM PLUG!!!!
2. If a drain valve must be installed, be sure and buy an air valve because this is the air side of the bladder tank and the normal brass ball valves will not hold air!!!
3. The tanks then must be precharged to the ideal system operating pressure within a plus or minus 5 PSI. Do not let a high precharge sit in the tank without filling the tank for any long length of time. This can cause bladder damage.
4. Check all connections for leaks after installation and operation. Check on the airside of the bladder at the air charging valve and drain.



Tank Diagram

Trouble Shooting and Bladder Repair

1. Tank Trouble Shooting: Check the air pressure first. If there is no air pressure, check your connections. Number ONE problem is a ball valve installed as a drain valve and the brass style valve will not hold air and the pressure slowly drops thru these valves.
2. To see if the bladder need replacement : check the air valve and see if any water comes out of the air valve and see if any water comes out of the air stem when pressed. If water is present, then there is a bladder problem.
3. To replace the bladder, open the cover by unbolting the top, be sure and relieve air pressure thru the stem. If need be, drain the tank by siphoning the water with a hose to the floor drain. Pull the bladder out and inspect. Many times the bladder has pulled away form the washers because of the system pressure imbalance of air and water. This can be fixed by stretching the bladder back over the washers and retighten the washers. This happened because the air charged was to low and would not stop the bladder from over expanding.
4. Replace the bladder in the tank, and bolt up the cover. Recharge with air and you are ready to put the tank back on line.



Bladder Diagram

JOB NAME _____
LOCATION _____

CONTRACTOR _____
CONTRACTOR P.O. NO. _____

ITEMS	QUANTITY
_____	_____
_____	_____
_____	_____
_____	_____
_____	_____