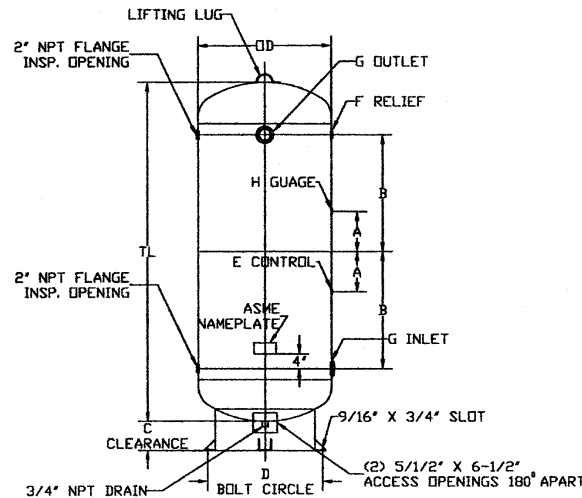


VERTICAL ASME AIR RECEIVER/ CHILL WATER STORAGE TANKS



PART NUMBER	ACTUAL VOLUME	CUBIC FEET	DIAMETER OD	LENGTH TL	HEIGHT HT	W.P.	WEIGHT
IAR-120	120 GAL	16.0	24	68	76-1/16	200	308
IAR-200	200 GAL	26.7	30	72	80	200	526
IAR-240	240 GAL	32.2	30	84	92	200	612
IAR-400	400 GAL	53.4	36	93	101	137	753
IAR-400-X	400 GAL	53.4	36	93	101	137	913

PART NUMBER	ACTUAL VOLUME	A (IN.)	B (IN.)	C (IN.)	D (IN.)	E (IN.)	F (IN.)	G (IN.)
IAR-120	120 GAL	7	22	8-1/16	21	1/2	1-1/2	2
IAR-200	200 GAL	8	23	8	28-3/4	1/2	1-1/2	3
IAR-240	240 GAL	10	29	8	28-3/4	1/2	1-1/2	3
IAR-400	400 GAL	11	32	8	31	1/2	1-1/2	3
IAR-400-X	400 GAL	11	32	8	31	1/2	1-1/2	3

Larger sizes can be fabricated to meet your needs. Options include Relief Valves, Pressure Gauges and manual or automatic underdrains. Please contact us for information.

USE: For Storage of Compressed Air/Chill Water Storage

SPECIFICATION: Carbon Steel Construction
 Maximum Temperature 650° F Primed & Painted Exterior
 See Column for Working Pressure of Tank (W.P.)
 Dimensions are subject to change without notice, please confirm actual dimensions with factory at time of order.

JOB NAME _____
 LOCATION _____

 CONTRACTOR _____
 CONTRACTOR P.O. NO. _____

ITEMS	QUANTITY
_____	_____
_____	_____
_____	_____
_____	_____
_____	_____



1005 E. Houston
 Broken Arrow, OK 74012
 Toll Free: 866-204-5229
 PH: 918-317-0401
 FAX: 918-317-0407
 www.wheatleyhvac.com
 e-mail: sales@globalflowproducts.com