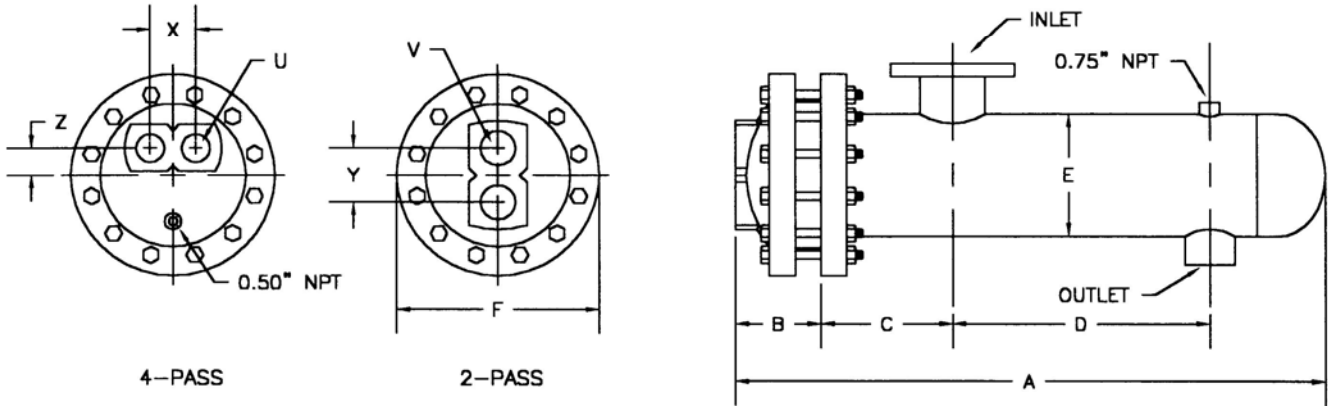


SUBMITTAL DATA 20" DIA. STEAM TO WATER U-TUBE HEAT EXCHANGER



MODEL NO.	HEAT EXCHANGER							2 PASS		4 PASS					
	A	B	C	D	E	F	INLET	OUTLET	Y	V	SQ. FT.	X	Z	U	SQ. FT.
S2036(*)A	55.50	6.06	13.00	21.00	20.00	27.25	12" FLG	4" FLG	11.12	8" NPT	180	8.75	4.50	6" NPT	174
S2048(*)A	67.50			33.00							245				237
S2060(*)A	79.50			45.00							310				300
S2072(*)A	91.50			57.00							375				363
S2084(*)A	103.50			69.00							440				426
S2096(*)A	115.50			81.00							505				489
S20108(*)A	127.50			93.00							570				552
S20120(*)A	139.50			105.00							635				615

(*) INSERT NUMBER OF PASSES.

MATERIALS OF CONSTRUCTION

PART	MATERIAL
HEAD	CAST IRON
SHELL	STEEL
TUBE SHEET	STEEL
TUBING	3/4" O.D. COPPER
BAFFLES	STEEL
CAGE MATERIAL	STEEL

DESIGNED & CONSTRUCTED PER ASME SECT VIII DIV 1

MAXIMUM OPERATING CONDITIONS

TUBE SIDE WORKING PRESSURE	125 PSI
SHELL SIDE WORKING PRESSURE	150 PSI
HYDROSTATIC TEST PRESSURE TUBE SIDE	250 PSI
HYDROSTATIC TEST PRESSURE SHELL SIDE	225 PSI
MAXIMUM TEMPERATURE TUBE SIDE	375°F
MAXIMUM TEMPERATURE SHELL SIDE	375°F

JOB NAME _____
 LOCATION _____
 ENGINEER _____
 CONTRACTOR _____
 SALES REP. _____

MODEL NO. ORDERED

STEAM PRESSURE	
ENT TEMP.	LEAV TEMP
TUBE SIDE FLOW	LIQUID
FOULING FACTOR	SQ FT
TUBE SIDE PRESSURE DROP	FT VELOCITY FT/SEC