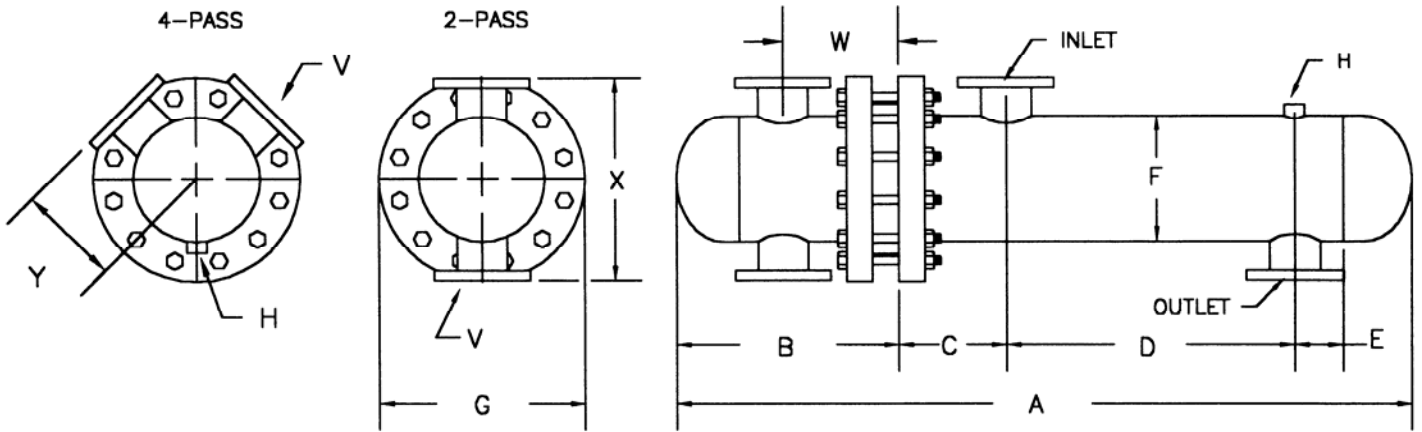




SUBMITTAL DATA
24" DIA. 150 PSI
STEAM TO WATER
U-TUBE HEAT EXCHANGER



MODEL NO.	HEAT EXCHANGER								2 PASS				4 PASS					
	A	B	C	D	E	F	G	H	INLET	OUTLET	W	V	X	SQ. FT.	W	V	Y	SQ. FT.
S2448(*)A	85.25	30.44	14	28	6	24	32	0.75 NPT	12" FLG	4" FLG	14.81	10" FLG	36	372	14.81	8" FLG	17.6	362
S2460(*)A	97.25			40										466				454
S2472(*)A	109.25			52										561				546
S2484(*)A	121.25			64										655				638
S2496(*)A	133.25			76										749				730
S24108(*)A	145.25			88										843				822
S24120(*)A	157.25			100										938				913

(*) INSERT NUMBER OF PASSES.

MATERIALS OF CONSTRUCTION

PART	MATERIAL
HEAD	STEEL
SHELL	STEEL
TUBE SHEET	STEEL
TUBING	3/4" O.D. COPPER 20 GA.
BAFFLES	STEEL
CAGE MATERIAL	STEEL

DESIGNED & CONSTRUCTED PER ASME SECT VIII DIV 1

MAXIMUM OPERATING CONDITIONS

TUBE SIDE WORKING PRESSURE	150 PSI
SHELL SIDE WORKING PRESSURE	150 PSI
HYDROSTATIC TEST PRESSURE TUBE SIDE	225 PSI
HYDROSTATIC TEST PRESSURE SHELL SIDE	225 PSI
MAXIMUM TEMPERATURE	375 DEG F

JOB NAME _____
 LOCATION _____
 ENGINEER _____
 CONTRACTOR _____
 SALES REP. _____

MODEL NO. ORDERED _____

STEAM PRESSURE	_____
ENT TEMP.	LEAV TEMP
TUBE SIDE FLOW	LIQUID
FOULING FACTOR	SQ FT
TUBE SIDE PRESSURE DROP	FT
VELOCITY	FT/SEC