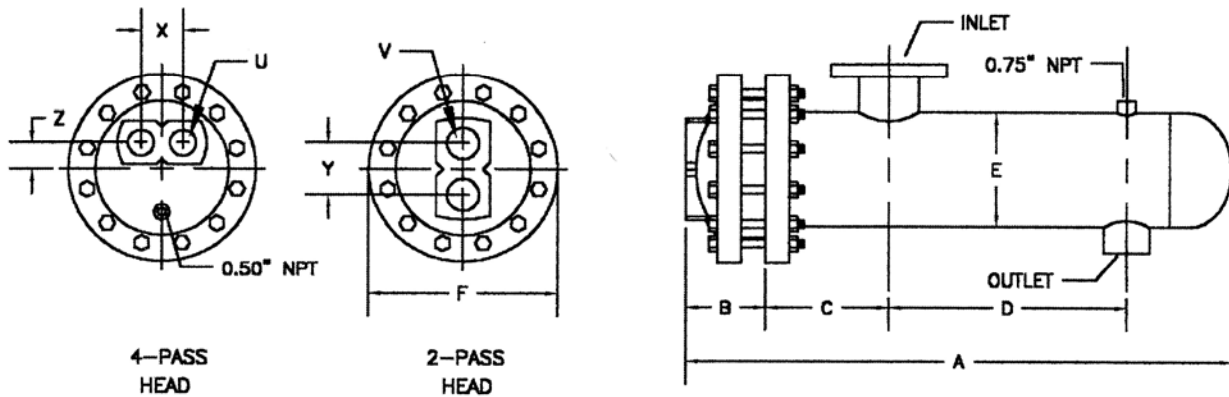


SUBMITTAL DATA 8" DIA. STEAM TO WATER U-TUBE HEAT EXCHANGER



MODEL NO.	HEAT EXCHANGER							2 PASS			4 PASS				
	A	B	C	D	E	F	INLET	OUTLET	Y	V	SQ. FT.	X	Z	U	SQ. FT.
S824(*)A	30.81	3.43	9.00	9.75	8.63	13.50	3" NPT	1.5" NPT	4.75	3" NPT	15.2	3.50	1.75	2" NPT	15.2
S836(*)A	42.81			21.75							24.0				24.0
S848(*)A	54.81			33.75							32.7				32.7
S860(*)A	66.81			45.75							41.5				41.5
S872(*)A	78.81			57.75							50.3				50.3
S884(*)A	90.81			69.75							59.1				59.1
S896(*)A	102.81			81.75							67.9				67.9
S8108(*)A	114.81			93.75							76.6				76.6
S8120(*)A	126.81			105.75							85.4				85.4

(*) INSERT NUMBER OF PASSES.

***WITH 304SS TUBES

MATERIALS OF CONSTRUCTION

PART	STANDARD	OPTIONAL
HEAD	CAST IRON	CAST BRONZE OR CAST S.S.
SHELL	STEEL	S.S.
TUBE SHEET	STEEL	BRASS OR S.S.
TUBING	3/4" OD 20 ga Copper	18ga Copper, 304SS, 316SS, 90/10 CU/Ni, OR 16 Ga. C.S.
CAGE MATERIAL	STEEL	BRASS OR S.S.
BAFFLES	STEEL	BRASS OR S.S.

MAXIMUM OPERATING CONDITIONS

TUBE SIDE WORKING PRESSURE	150 PSI
SHELL SIDE WORKING PRESSURE	150 PSI
HYDROSTATIC TEST PRESSURE TUBE SIDE	300 PSI
HYDROSTATIC TEST PRESSURE SHELL SIDE	195 PSI
MAXIMUM TEMPERATURE TUBE SIDE	375°F
MAXIMUM TEMPERATURE SHELL SIDE	375°F

JOB NAME _____
 LOCATION _____
 ENGINEER _____
 CONTRACTOR _____
 SALES REP. _____

SBC1.DWG REV: B

MODEL NO. ORDERED

STEAM PRESSURE	5	
ENT TEMP.		LEAV TEMP
TUBE SIDE FLOW		LIQUID
FOULING FACTOR		SQ FT
TUBE SIDE PRESSURE DROP	FT	VELOCITY FT/SEC