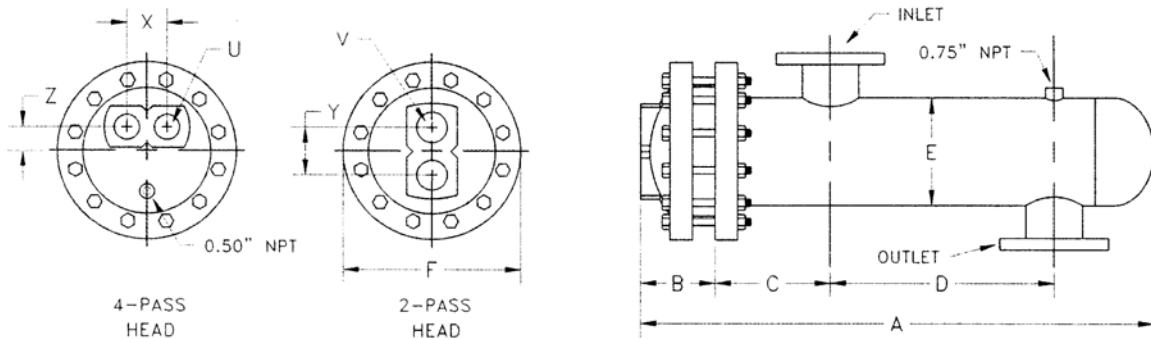


SUBMITTAL DATA

14" DIA. WATER TO WATER
U-TUBE HEAT EXCHANGER



Model No.	HEAT EXCHANGER								2 PASS		4 PASS				
	A	B	C	D	E	F	INLET	OUTLET	Y	V	SQ. FT.	X	Z	U	SQ. FT.
W1424(*)A	39.89	5.51	11.00	12.50	14.00	21.00	4" FLG	4" FLG	8.00	6" NPT	57	5.88	3.31	4" NPT	54
W1436(*)A	51.89			24.50							87				83
W1448(*)A	63.89			36.50							117				112
W1460(*)A	75.89			48.50							147				141
W1472(*)A	87.89			60.50							177				169
W1484(*)A	99.89			72.50							207				198
W1496(*)A	111.89			84.50							237				227
W14108(*)A	123.89			96.50							266				256
W14120(*)A	135.89			108.50							296				284

(*) INSERT NUMBER OF PASSES

DESIGNED & CONSTRUCTED PER ASME SECT VIII DIV 1

MATERIALS OF CONSTRUCTION

PART	STANDARD	OPTIONAL
HEAD	CAST IRON	**FAB. C.S. OR S.S.
SHELL	STEEL	S.S.
TUBE SHEET	STEEL	BRASS*** OR S.S.
TUBING	3/4" OD 20 ga Copper	18 ga. Copper, 304 S.S., 316 S.S. 90/10 CU/NI, OR 16 Ga. C.S.
CAGE MATERIAL	STEEL	BRASS OR S.S.
BAFFLES	STEEL	BRASS OR S.S.

** NOT SHOWN ON THIS SHEET

MAXIMUM OPERATING CONDITIONS

	HEAD STYLE	
	CAST IRON	FABRICATED C.S. OR S.S.
TUBE SIDE WORKING PRESSURE	125 PSI	150 PSI
SHELL SIDE WORKING PRESSURE	150 PSI	150 PSI
HYDROSTATIC TEST PRESSURE TUBE SIDE	250 PSI	300 PSI
HYDROSTATIC TEST PRESSURE SHELL SIDE	195 PSI	195 PSI
MAXIMUM TEMPERATURE TUBE SIDE***	375°F	375°F
MAXIMUM TEMPERATURE SHELL SIDE***	375°F	375°F

***DERATE TO 300°F WITH BRASS TUBESHEET

Job Name _____
 Location _____
 Engineer _____
 Architect _____
 Sales Rep. _____
 Contractor _____

Model No. Ordered	Tube Side	Shell Side
Flow (GPM)	_____	_____
Ent. Temp.	_____	_____
Leav. Temp.	_____	_____
Fouling Factor	_____	_____