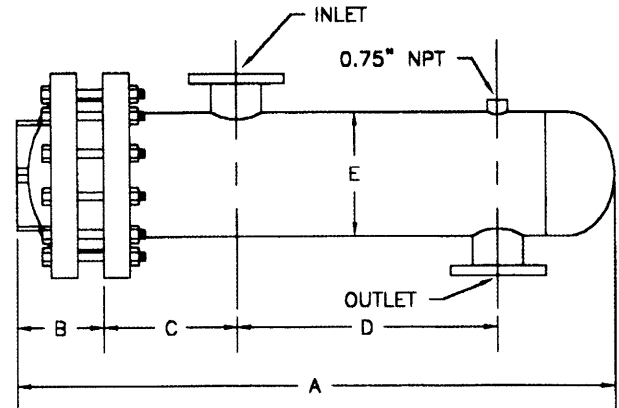
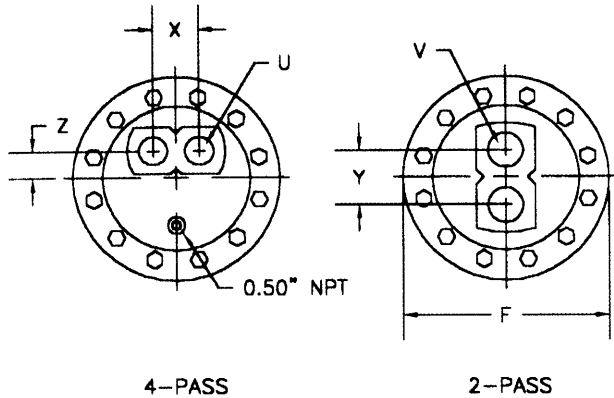


# American WHEATLEY

## HVAC PRODUCTS

### SUBMITTAL DATA

20" DIA. WATER TO WATER  
U-TUBE HEAT EXCHANGER



MODEL NO.	HEAT EXCHANGER								2 PASS			4 PASS			
	A	B	C	D	E	F	INLET	OUTLET	Y	V	SQ. FT.	X	Z	U	SQ. FT.
W2036(*)A	55.50	6.06	13.00	21.00	20.00	27.25	6\"	6\"	11.12	8\"	180	8.75	4.50	6\"	174
W2048(*)A	67.50			33.00							245				237
W2060(*)A	79.50			45.00							310				300
W2072(*)A	91.50			57.00							375				363
W2084(*)A	103.50			69.00							440				426
W2096(*)A	115.50			81.00							505				489
W20108(*)A	127.50			93.00							570				552
W20120(*)A	139.50			105.00							635				615

(\*) INSERT NUMBER OF PASSES.

#### MATERIALS OF CONSTRUCTION

PART	MATERIAL
HEAD	CAST IRON
SHELL	STEEL
TUBE SHEET	STEEL
TUBING	3/4" O.D. COPPER
BAFFLES	STEEL
CAGE MATERIAL	STEEL

DESIGNED & CONSTRUCTED PER ASME SECT VIII DIV 1

#### MAXIMUM OPERATING CONDITIONS

TUBE SIDE WORKING PRESSURE	125 PSI
SHELL SIDE WORKING PRESSURE	150 PSI
HYDROSTATIC TEST PRESSURE TUBE SIDE	250 PSI
HYDROSTATIC TEST PRESSURE SHELL SIDE	225 PSI
MAXIMUM TEMPERATURE TUBE SIDE	375°F
MAXIMUM TEMPERATURE SHELL SIDE	375°F

JOB NAME \_\_\_\_\_  
 LOCATION \_\_\_\_\_  
 ENGINEER \_\_\_\_\_  
 CONTRACTOR \_\_\_\_\_  
 SALES REP. \_\_\_\_\_

#### MODEL NO. ORDERED

	TUBE SIDE	SHELL SIDE
FLOW (GPM)		
ENT TEMP.		
LEAV TEMP		
FOULING FACTOR		