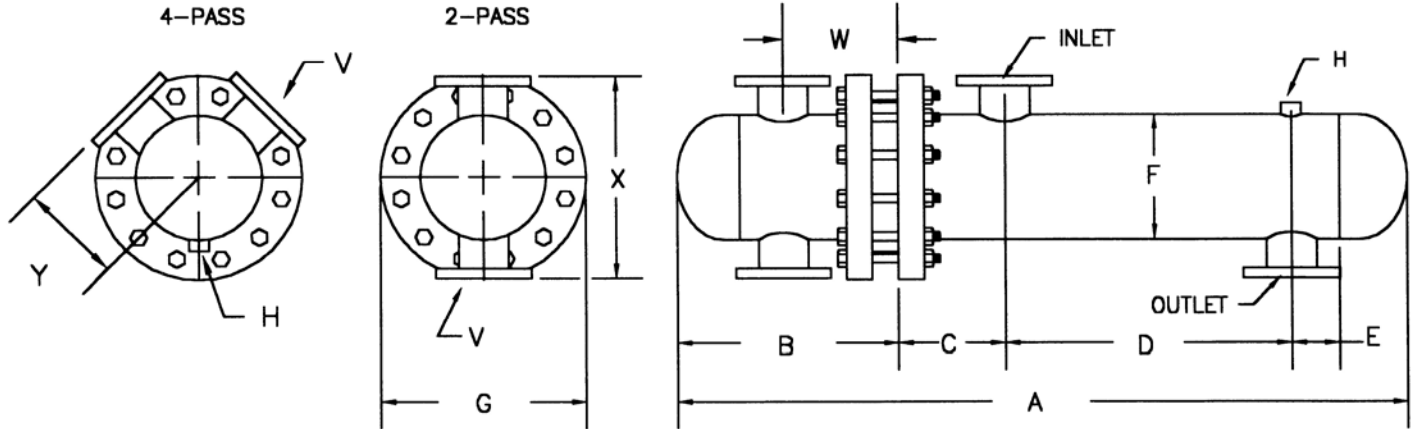




**SUBMITTAL DATA**  
**24" DIA. 150 PSI**  
**WATER TO WATER**  
**U-TUBE HEAT EXCHANGER**



MODEL NO.	HEAT EXCHANGER								2 PASS				4 PASS					
	A	B	C	D	E	F	G	H	INLET	OUTLET	W	V	X	SQ. FT.	W	V	Y	SQ. FT.
W2448(*)A	85.25	30.44	14	26	8	24	32	0.75 NPT	10" FLG	10" FLG	14.81	10" FLG	36	372	14.81	8" FLG	17.6	362
W2460(*)A	97.25			38										454				
W2472(*)A	109.25			50										546				
W2484(*)A	121.25			62										638				
W2496(*)A	133.25			74										730				
W24108(*)A	145.25			86										822				
W24120(*)A	157.25			98										913				

(\*) INSERT NUMBER OF PASSES.

**MATERIALS OF CONSTRUCTION**

PART	MATERIAL
HEAD	STEEL
SHELL	STEEL
TUBE SHEET	STEEL
TUBING	3/4" O.D. COPPER 20 GA.
BAFFLES	STEEL
CAGE MATERIAL	STEEL

DESIGNED & CONSTRUCTED PER ASME SECT VIII DIV 1

**MAXIMUM OPERATING CONDITIONS**

TUBE SIDE WORKING PRESSURE	150 PSI
SHELL SIDE WORKING PRESSURE	150 PSI
HYDROSTATIC TEST PRESSURE TUBE SIDE	225 PSI
HYDROSTATIC TEST PRESSURE SHELL SIDE	225 PSI
MAXIMUM TEMPERATURE	375 DEG F

JOB NAME \_\_\_\_\_  
 LOCATION \_\_\_\_\_  
 ENGINEER \_\_\_\_\_  
 CONTRACTOR \_\_\_\_\_  
 SALES REP. \_\_\_\_\_

**MODEL NO. ORDERED**

	TUBE SIDE	SHELL SIDE
FLOW (GPM)		
ENT TEMP.		
LEAV TEMP		
FOULING FACTOR		