

# Fabricated Flow Diverter/Suction Diffuser 150# PSI

## Features:

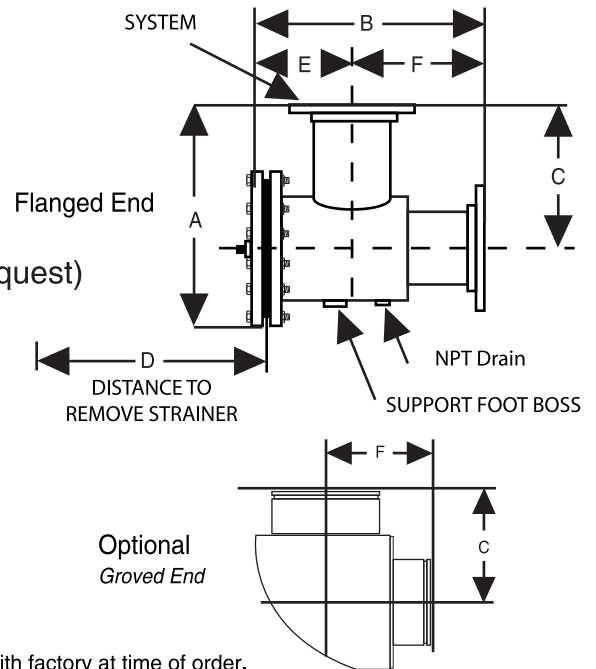
- Carbon Steel Construction
- Space Saving Design
- 20 Mesh Stainless Steel Start up and 5/32" Permanent Strainer combines Strainer & 90° Elbow
- Back Pull Out Strainer
- Class 150 RF Flanged
- Straightening Vanes (Stainless Steel Material upon request)
- Maximum Temperature 450° Degrees

## Optional Features:

- Stainless Steel and other materials
- Larger Sizes upon Request
- Davit arms
- Additional pressure classifications

All packaging materials, thread protectors, plastic plugs and caps must be removed before installation.

Dimensions are subject to change without notice, please confirm actual dimensions with factory at time of order.



PART NUMBER	SIZE	SYSTEM CONN. (IN.)*	PUMP CONN. (IN.)*	A	B	C	D	E	F
FD-1515-F1	1.5 X 1.5	1.5	1.5	11 1/2	12 1/4	7	6 1/2	5 1/4	7
FD-0213-F1	2 X 1.25	2	1.25	11 1/2	12 1/4	7	6 1/2	5 1/4	7
FD-0215-F1	2 X 1.5	2	1.5	11 1/2	12 1/4	7	6 1/2	5 1/4	7
FD-0202-F1	2 X 2	2	2	11 1/2	12 1/4	7	6 1/2	5 1/4	7
FD-2515-F1	2.5 X 1.5	2.5	1.5	11 1/2	12 1/4	7	6 1/2	5 1/4	7
FD-2502-F1	2.5 X 2	2.5	2	11 1/2	12 1/4	7	6 1/2	5 1/4	7
FD-2525-F1	2.5 X 2.5	2.5	2.5	11 1/2	12 1/4	7	6 1/2	5 1/4	7
FD-0315-F1	3 X 1.5	3	1.5	11 1/2	12 1/4	7	6 1/2	5 1/4	7
FD-0302-F1	3 X 2	3	2	11 1/2	12 1/4	7	6 1/2	5 1/4	7
FD-0325-F1	3 X 2.5	3	2.5	11 1/2	12 1/4	7	6 1/2	5 1/4	7
FD-0303-F1	3 X 3	3	3	13	13 1/2	8	7 1/2	5 1/2	8
FD-0415-F1	4 X 1.5	4	1.5	13	13 1/2	8	7 1/2	5 1/2	8
FD-0402-F1	4 X 2	4	2	13	13 1/2	8	7 1/2	5 1/2	8
FD-0425-F1	4 X 2.5	4	2.5	13	13 1/2	8	7 1/2	5 1/2	8
FD-0403-F1	4 X 3	4	3	13	13 1/2	8	7 1/2	5 1/2	8
FD-0404-F1	4 X 4	4	4	14 1/2	15	9	8 1/2	6	9

F1 = Fabricated 150#

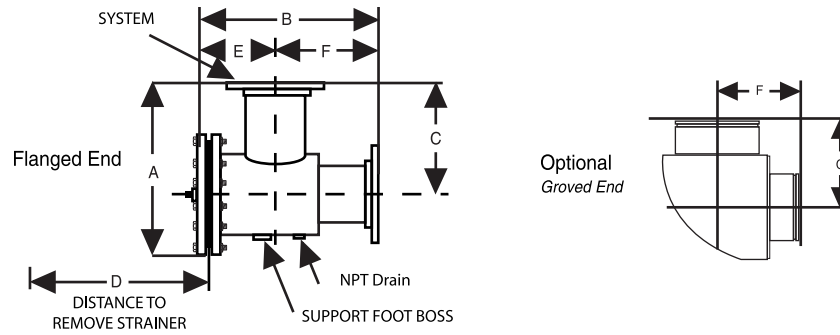
\*Grooved end available through 10" as Standard Production. Larger sizes are special and priced on application.

JOB NAME \_\_\_\_\_  
 LOCATION \_\_\_\_\_  
 \_\_\_\_\_  
 \_\_\_\_\_  
 CONTRACTOR \_\_\_\_\_  
 CONTRACTOR P.O. NO. \_\_\_\_\_

ITEMS	QUANTITY
_____	_____
_____	_____
_____	_____
_____	_____
_____	_____

**A GFP COMPANY**

2701 W. Concord Street  
 Broken Arrow, OK 74012  
 Toll Free: 866-204-5229  
 PH: 918-317-0401  
 FAX: 918-317-0407  
 www.wheatleyhvac.com  
 e-mail: sales@globalflowproducts.com



PART NUMBER	SIZE	SYSTEM CONN. (IN.)*	PUMP CONN. (IN.)*	HEIGHT A (IN.)	WIDTH B (IN.)	C	D	E	F
FD-0525-F1	5 X 2.5	5	2.5	14 1/2	15	9	8 1/2	6	9
FD-0503-F1	5 X 3	5	3	14 1/2	15	9	8 1/2	6	9
FD-0504-F1	5 X 4	5	4	14 1/2	15	9	8 1/2	6	9
FD-0505-F1	5 X 5	5	5	16 1/2	17 1/4	10	10 1/4	7 1/4	10
FD-0625-F1	6 X 2.5	6	2.5	16 3/4	17 1/4	10	10 1/4	7 1/4	10
FD-0603-F1	6 x 3	6	3	16 3/4	17 1/4	10	10 1/4	7 1/4	10
FD-0604-F1	6 x 4	6	4	16 3/4	17 1/4	10	10 1/4	7 1/4	10
FD-0605-F1	6 x 5	6	5	16 3/4	17 1/4	10	10 1/4	7 1/4	10
FD-0606-F1	6 x 6	6	6	16 3/4	17 1/4	10	10 1/4	7 1/4	10
FD-0804-F1	8 x 4	8	4	20	21	12	12 1/4	9	12
FD-0805-F1	8 x 5	8	5	20	21	12	12 1/4	9	12
FD-0806-F1	8 x 6	8	6	20	21	12	12 1/4	9	12
FD-0808-F1	8 x 8	8	8	20	21	12	12 1/4	9	12
FD-1005-F1	10 x 5	10	5	23 1/2	24 1/2	14	16 3/4	10 1/2	14
FD-1006-F1	10 x 6	10	6	23 1/2	24 1/2	14	16 3/4	10 1/2	14
FD-1008-F1	10 x 8	10	8	23 1/2	24 1/2	14	16 3/4	10 1/2	14
FD-1010-F1	10 x 10	10*	10	23 1/2	24 1/2	14	16 3/4	10 1/2	14
FD-1206-F1	12 x 6	12	6	28	28	16	19	12	16
FD-1208-F1	12 x 8	12	8	28	28	16	19	12	16
FD-1210-F1	12 x 10	12	10	28	28	16	19	12	16
FD-1212-F1	12 x 12	12	12	28	28	16	19	12	16
FD-1408-F1	14 x 8	14	8	29 1/2	29 5/8	17	19 7/8	12 5/8	17
FD-1410-F1	14 x 10	14	10	29 1/2	29 5/8	17	19 7/8	12 5/8	17
FD-1412-F1	14 x 12	14	12	29 1/2	29 5/8	17	19 7/8	12 5/8	17
FD-1414-F1	14 x 14	14	14	29 1/2	29.63	17	19.88	12.63	17
FD-1610-F1	16 x 10	16	10	31.75	31.75	18	21.5	13.75	18
FD-1612-F1	16 x 12	16	12	31.75	31.75	18	21.5	13.75	18
FD-1614-F1	16 x 14	16	14	31.75	31.75	18	21.5	13.75	18
FD-1616-F1	16 x 16	16	16	31.75	31.75	18	21.5	13.75	18
FD-1812-F1	18 x 12	18	12	43	51 5/32	27	33 3/4	21 5/32	30
FD-1814-F1	18 x 14	18	14	43	51 5/32	27	33 3/4	21 5/32	30
FD-2012-F1	20 x 12	20	12	43	51 5/32	27	33 3/4	21 5/32	30
FD-2014-F1	20 x 14	20	14	43	51 5/32	27	33 3/4	21 5/32	30
FD-2016-F1	20 x 16	20	16	43	51 5/32	27	33 3/4	21 5/32	30
FD-2020-F1	20 x 20	20	20	43	51 5/32	27	33 3/4	21 5/32	30
FD-2414-F1	24 x 14	24	14	48 1/8	58 7/8	28 3/4	33 11/16	22 7/16	36 7/16
FD-2416-F1	24 x 16	24	16	48 1/8	58 7/8	28 3/4	33 11/16	22 7/16	36 7/16
FD-2420-F1	24 x 20	24	20	48 1/8	58 7/8	28 3/4	33 11/16	22 7/16	36 7/16

F1 = Fabricated 150#

\*Grooved end available through 10" as Standard Production. Larger sizes are special and priced on application.

All packaging materials, thread protectors, plastic plugs and caps must be removed before installation. Dimensions are subject to change without notice, please confirm actual dimensions with factory at time of order.