

Fabricated Flow Diverter/Suction Diffuser

250#/300# PSI

Features:

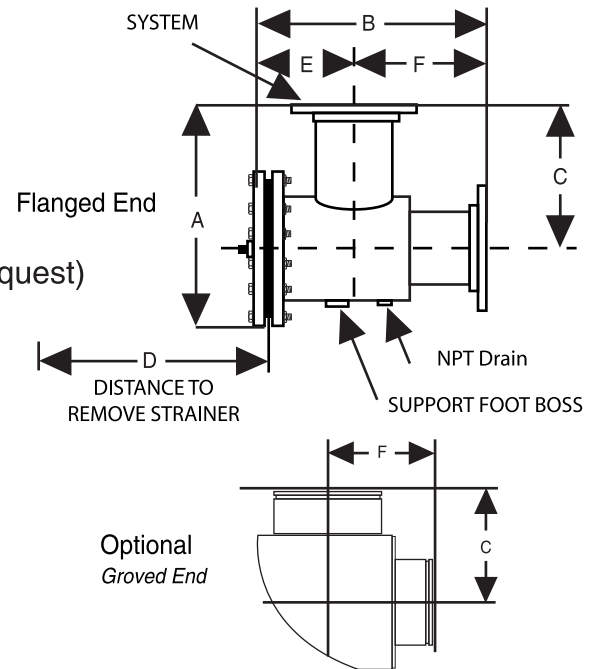
- Carbon Steel Construction
- Space Saving Design
- 20 Mesh Stainless Steel Start up and 5/32" Permanent Strainer combines Strainer & 90° Elbow
- Back Pull Out Strainer
- Class 250/300 RF Flanged
- Straightening Vanes (Stainless Steel Material upon request)
- Maximum Temperature 250° Degrees

Optional Features:

- Stainless Steel and other materials
- Larger Sizes upon Request
- Davit arms

All packaging materials, thread protectors, plastic plugs and caps must be removed before installation.

Dimensions are subject to change without notice, please confirm actual dimensions with factory at time of order.



PART NUMBER	SIZE	SYSTEM CONN. (IN.)*	PUMP CONN. (IN.)*	A	B	C	D	E	F
FD-1515-F3	1.5 X 1.5	1.5	1.5	12 11/16	13 1/16	7 7/8	7 1/8	5 15/16	7 1/8
FD-0213-F3	2 X 1.25	2	1.25	12 11/16	13 1/16	7 7/8	7 1/8	5 15/16	7 1/8
FD-0215-F3	2 X 1.5	2	1.5	12 11/16	13 1/16	7 7/8	7 1/8	5 15/16	7 1/8
FD-0202-F3	2 X 2	2	2	12 11/16	13 1/16	7 7/8	7 1/8	5 15/16	7 1/8
FD-2515-F3	2.5 X 1.5	2.5	1.5	12 11/16	13 1/16	7 7/8	7 1/8	5 15/16	7 1/8
FD-2502-F3	2.5 X 2	2.5	2	12 11/16	13 1/16	7 7/8	7 1/8	5 15/16	7 1/8
FD-2525-F3	2.5 X 2.5	2.5	2.5	12 11/16	13 1/16	7 7/8	7 1/8	5 15/16	7 1/8
FD-0315-F3	3 X 1.5	3	1.5	12 11/16	13 1/16	7 7/8	7 1/8	5 15/16	7 1/8
FD-0302-F3	3 X 2	3	2	12 11/16	13 1/16	7 7/8	7 1/8	5 15/16	7 1/8
FD-0325-F3	3 X 2.5	3	2.5	12 11/16	13 1/16	7 7/8	7 1/8	5 15/16	7 1/8
FD-0303-F3	3 X 3	3	3	14 1/2	15 15/16	9	9 1/4	6 15/16	9
FD-0415-F3	4 X 1.5	4	1.5	14 1/2	15 15/16	9	9 1/4	6 15/16	9
FD-0402-F3	4 X 2	4	2	14 1/2	15 15/16	9	9 1/4	6 15/16	9
FD-0425-F3	4 X 2.5	4	2.5	14 1/2	15 15/16	9	9 1/4	6 15/16	9
FD-0403-F3	4 X 3	4	3	14 1/2	15 15/16	9	9 1/4	6 15/16	9
FD-0404-F3	4 X 4	4	4	16 1/4	17 1/2	10	10 1/4	7 1/2	10

F3 = Fabricated 250#/300#

*Grooved end available through 10" as Standard Production. Larger sizes are special and priced on application.

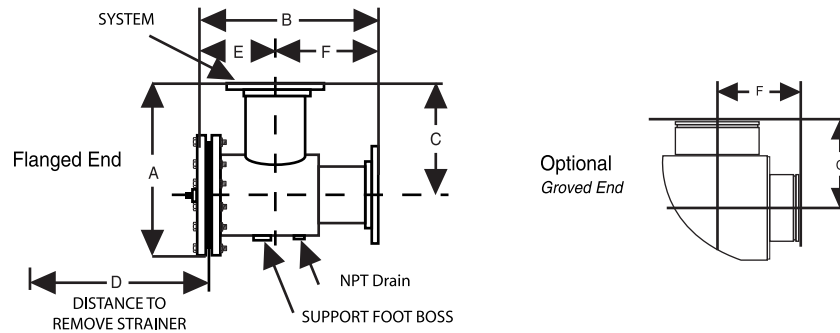
JOB NAME _____
 LOCATION _____

 CONTRACTOR _____
 CONTRACTOR P.O. NO. _____

ITEMS	QUANTITY
_____	_____
_____	_____
_____	_____
_____	_____
_____	_____

A GFP COMPANY

2701 W. Concord Street
 Broken Arrow, OK 74012
 Toll Free: 866-204-5229
 PH: 918-317-0401
 FAX: 918-317-0407
 www.wheatleyhvac.com
 e-mail: sales@globalflowproducts.com



PART NUMBER	SIZE	SYSTEM CONN. (IN.)*	PUMP CONN. (IN.)*	HEIGHT A (IN.)	WIDTH B (IN.)	C	D	E	F
FD-0525-F3	5 X 2.5	5	2.5	16 1/4	17 1/2	10	10 1/4	7 1/2	10
FD-0503-F3	5 X 3	5	3	16 1/4	17 1/2	10	10 1/4	7 1/2	10
FD-0504-F3	5 X 4	5	4	16 1/4	17 1/2	10	10 1/4	7 1/2	10
FD-0505-F3	5 X 5	5	5	18 1/4	18 5/16	10 3/4	12	8 5/16	10
FD-0625-F3	6 X 2.5	6	2.5	18 1/4	18 5/16	10 3/4	12	8 5/16	10
FD-0603-F3	6 x 3	6	3	18 1/4	18 5/16	10 3/4	12	8 5/16	10
FD-0604-F3	6 x 4	6	4	18 1/4	18 5/16	10 3/4	12	8 5/16	10
FD-0605-F3	6 x 5	6	5	18 1/4	18 5/16	10 3/4	12	8 5/16	10
FD-0606-F3	6 x 6	6	6	18 1/4	18 5/16	10 3/4	12	8 5/16	10
FD-0804-F3	8 x 4	8	4	21 1/2	22 1/16	12 3/4	14 1/2	10 1/16	12
FD-0805-F3	8 x 5	8	5	21 1/2	22 1/16	12 3/4	14 1/2	10 1/16	12
FD-0806-F3	8 x 6	8	6	21 1/2	22 1/16	12 3/4	14 1/2	10 1/16	12
FD-0808-F3	8 x 8	8	8	21 1/2	22 1/16	12 3/4	14 1/2	10 1/16	12
FD-1005-F3	10 x 5	10	5	24 1/4	25 15/16	14	18 1/2	11 15/16	14
FD-1006-F3	10 x 6	10	6	24 1/4	25 15/16	14	18 1/2	11 15/16	14
FD-1008-F3	10 x 8	10	8	24 1/4	25 15/16	14	18 1/2	11 15/16	14
FD-1010-F3	10 x 10	10	10	24 1/4	25 15/16	14	18 1/2	11 15/16	14
FD-1206-F3	12 x 6	12	6	29 3/4	32 13/16	17	23	15 13/16	17
FD-1208-F3	12 x 8	12	8	29 3/4	32 13/16	17	23	15 13/16	17
FD-1210-F3	12 x 10	12	10	29 3/4	32 13/16	17	23	15 13/16	17
FD-1212-F3	12 x 12	12	12	29 3/4	32 13/16	17	23	15 13/16	17
FD-1408-F3	14 x 8	14	8	32	32 3/16	18	23 1/16	15 3/16	17
FD-1410-F3	14 x 10	14	10	32	32 3/16	18	23 1/16	15 3/16	17
FD-1412-F3	14 x 12	14	12	32	32 3/16	18	23 1/16	15 3/16	17
FD-1414-F3	14 x 14	14	14	32	32 3/16	18	23 1/16	15 3/16	17
FD-1610-F3	16 x 10	16	10	35 1/4	38 1/16	20	23	18 1/16	20
FD-1612-F3	16 x 12	16	12	35 1/4	38 1/16	20	23	18 1/16	20
FD-1614-F3	16 x 14	16	14	35 1/4	38 1/16	20	23	18 1/16	20

F3 = Fabricated 250#/300#

*Grooved end available through 10" as Standard Production. Larger sizes are special and priced on application.

All packaging materials, thread protectors, plastic plugs and caps must be removed before installation. Dimensions are subject to change without notice, please confirm actual dimensions with factory at time of order.