

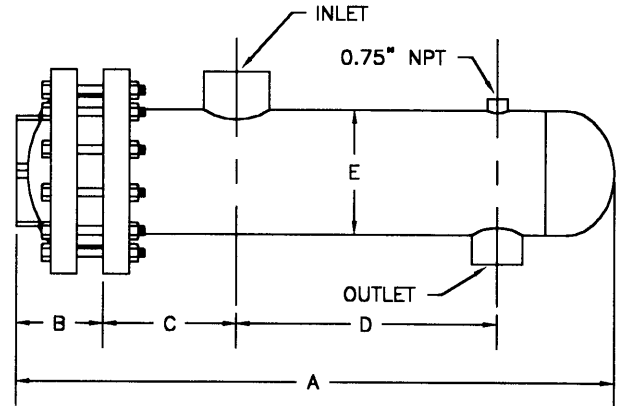
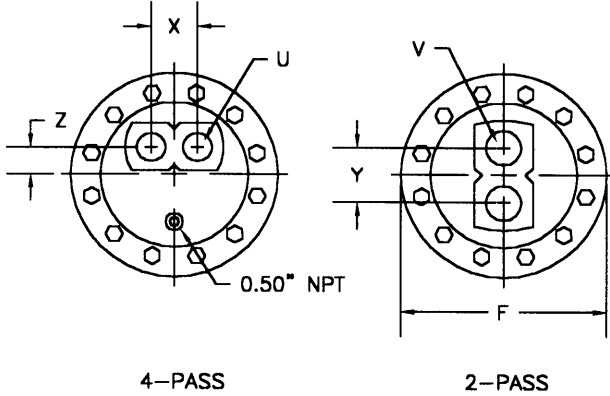
WHEATLEY®

HVAC PRODUCTS

SUBMITTAL DATA

6" DIA. STEAM TO WATER

U-TUBE HEAT EXCHANGER



| MODEL NO. | HEAT EXCHANGER | | | | | | | 2 PASS | | | 4 PASS | | | | |
|-----------|----------------|------|------|--------|------|-------|--------|----------|------|--------|---------|------|------|----------|---------|
| | A | B | C | D | E | F | INLET | OUTLET | Y | V | SQ. FT. | X | Z | U | SQ. FT. |
| S624(*)A | 30.01 | | | 12.75 | | | | | | | 8.0 | | | | 8.0 |
| S636(*)A | 42.01 | | | 24.75 | | | | | | | 12.8 | | | | 12.8 |
| S648(*)A | 54.01 | | | 36.75 | | | | | | | 17.6 | | | | 17.6 |
| S660(*)A | 66.01 | | | 48.75 | | | | | | | 22.4 | | | | 22.4 |
| S672(*)A | 78.01 | 3.13 | 6.00 | 60.75 | 6.63 | 11.00 | 3" NPT | 1.5" NPT | 3.75 | 2" NPT | 27.1 | 2.69 | 1.25 | 1.5" NPT | 27.1 |
| S684(*)A | 90.01 | | | 72.75 | | | | | | | 31.9 | | | | 31.9 |
| S696(*)A | 102.01 | | | 84.75 | | | | | | | 36.7 | | | | 36.7 |
| S6108(*)A | 114.01 | | | 96.75 | | | | | | | 41.5 | | | | 41.5 |
| S6120(*)A | 126.01 | | | 108.75 | | | | | | | 46.3 | | | | 46.3 |

(*) INSERT NUMBER OF PASSES.

MATERIALS OF CONSTRUCTION

| PART | MATERIAL |
|---------------|------------------|
| HEAD | CAST IRON |
| SHELL | STEEL |
| TUBE SHEET | STEEL |
| TUBING | 3/4" O.D. COPPER |
| BAFFLES | STEEL |
| CAGE MATERIAL | STEEL |

DESIGNED & CONSTRUCTED PER ASME SECT VIII DIV 1

MAXIMUM OPERATING CONDITIONS

| | |
|--------------------------------------|---------|
| TUBE SIDE WORKING PRESSURE | 150 PSI |
| SHELL SIDE WORKING PRESSURE | 150 PSI |
| HYDROSTATIC TEST PRESSURE TUBE SIDE | 300 PSI |
| HYDROSTATIC TEST PRESSURE SHELL SIDE | 225 PSI |
| MAXIMUM TEMPERATURE TUBE SIDE | 375°F |
| MAXIMUM TEMPERATURE SHELL SIDE | 375°F |

JOB NAME _____
 LOCATION _____
 ENGINEER _____
 CONTRACTOR _____
 SALES REP. _____

MODEL NO. ORDERED

| | |
|-------------------------|-----------|
| STEAM PRESSURE | |
| ENT TEMP. | LEAV TEMP |
| TUBE SIDE FLOW | LIQUID |
| FOULING FACTOR | SQ FT |
| TUBE SIDE PRESSURE DROP | FT |
| VELOCITY | FT/SEC |